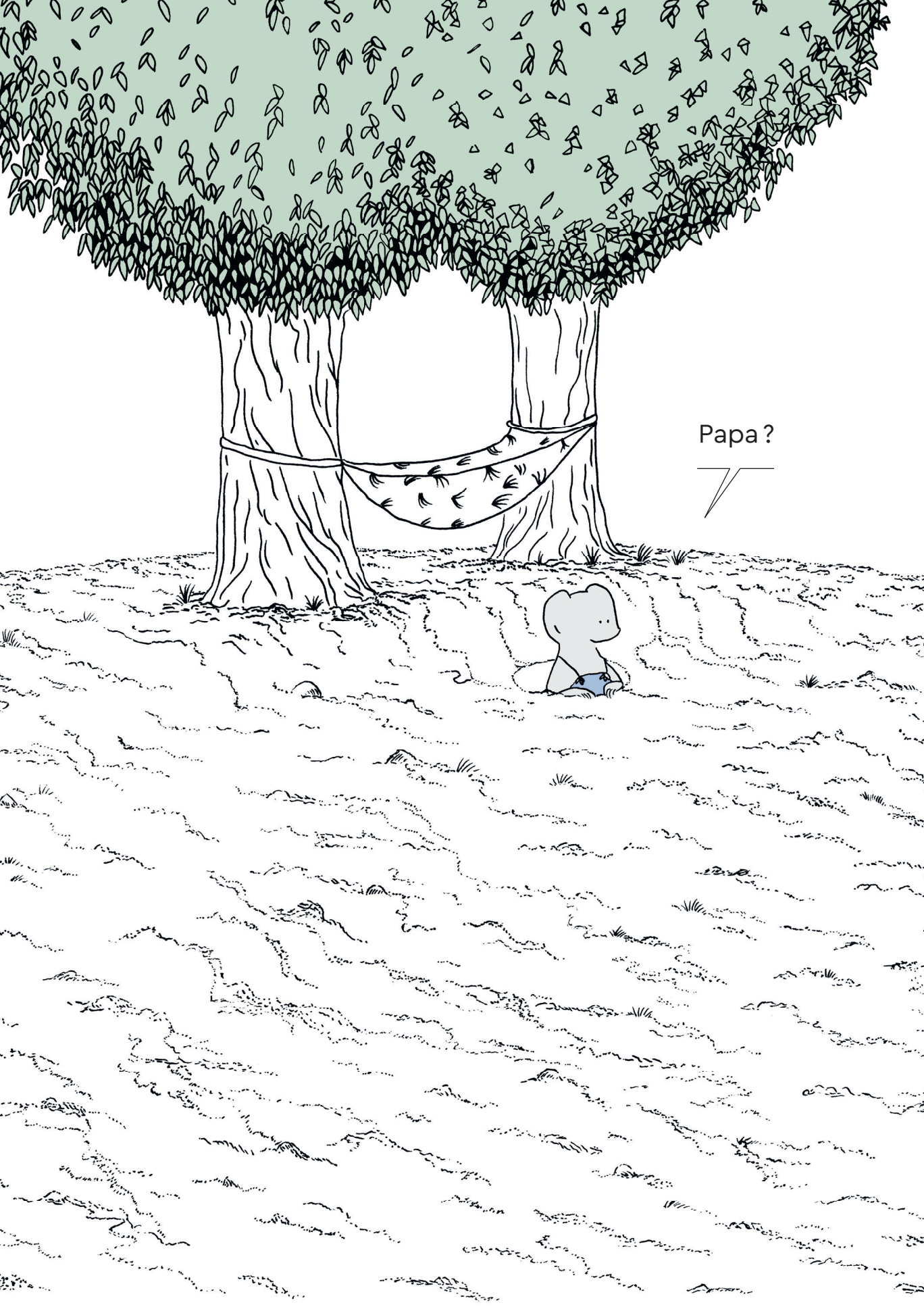


The illustration depicts a whimsical scene in a garden. On the left, a large tree with dense green foliage dominates the upper half of the frame. A mouse-like character with a long tail, wearing blue overalls, stands at the base of the tree, touching its trunk. In the center, a small orange butterfly with black markings is in flight. On the right, another mouse-like character, wearing yellow overalls, sits cross-legged on the grass, looking towards the butterfly. The ground is green with scattered yellow flowers and a dashed line path. The overall style is simple and illustrative.

Charline Le Maguet
**Le secret
de Soro**



Papa?



Oui, Musa ?

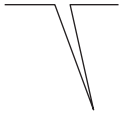


Dis, Papa, je peux aller jouer
avec Soro près du lac ?

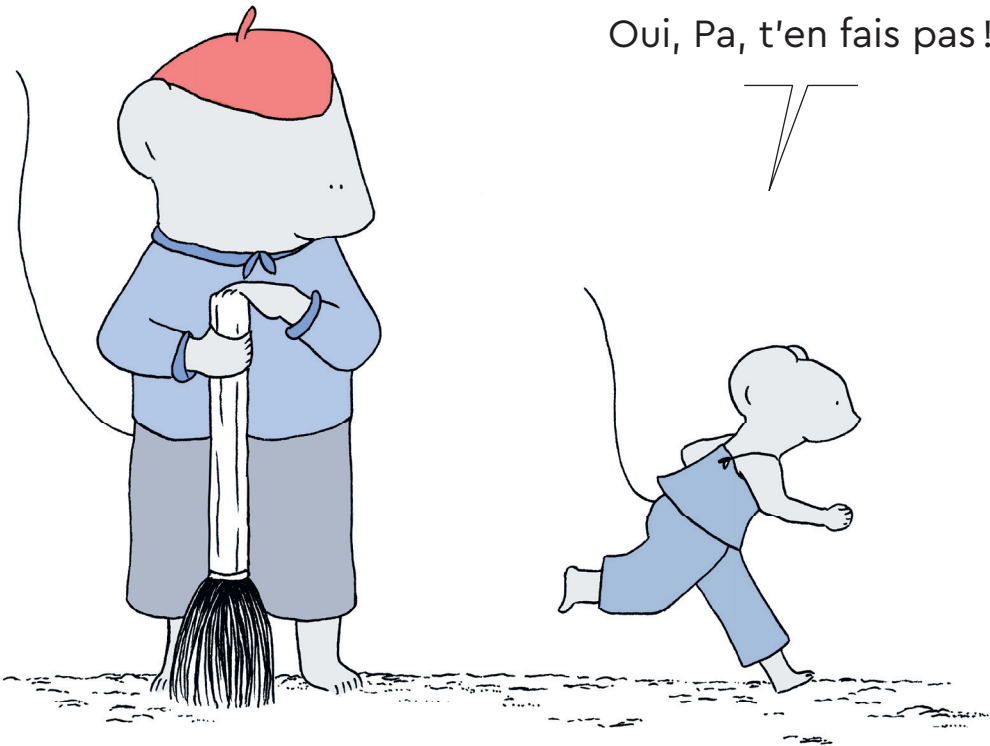
Oui, mais tu rentres
pour dîner, d'accord ?



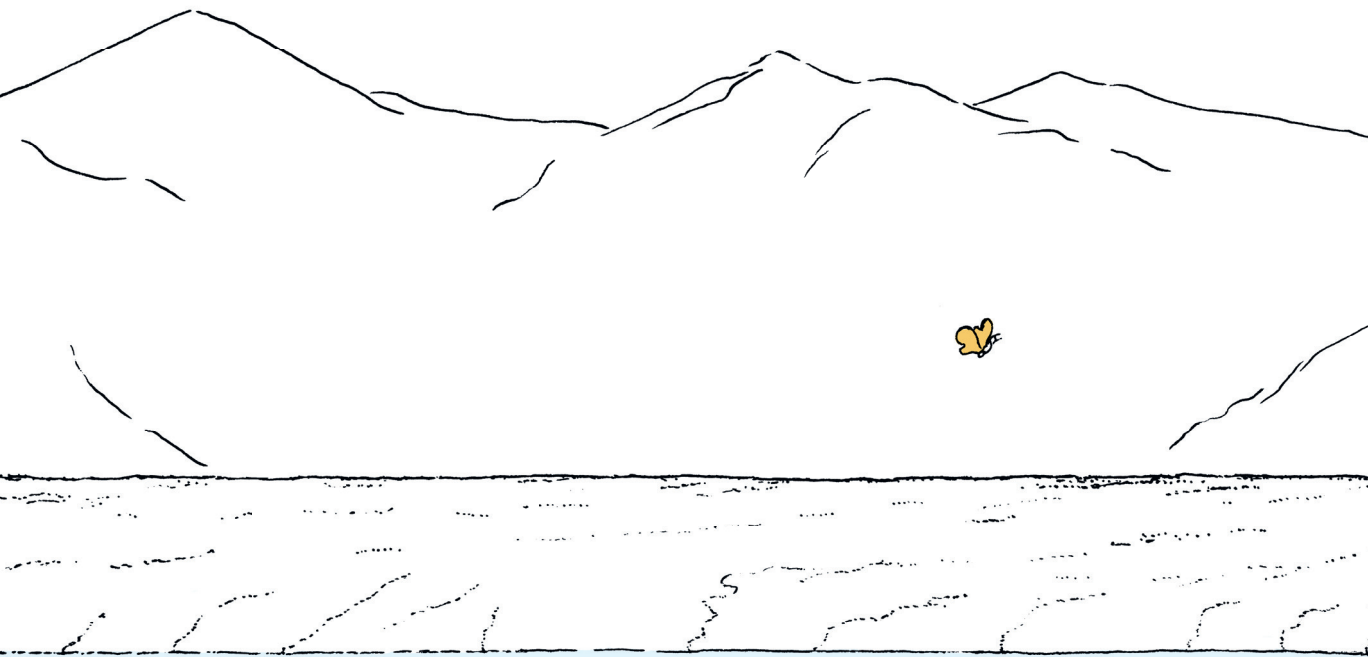
Et faites
attention!



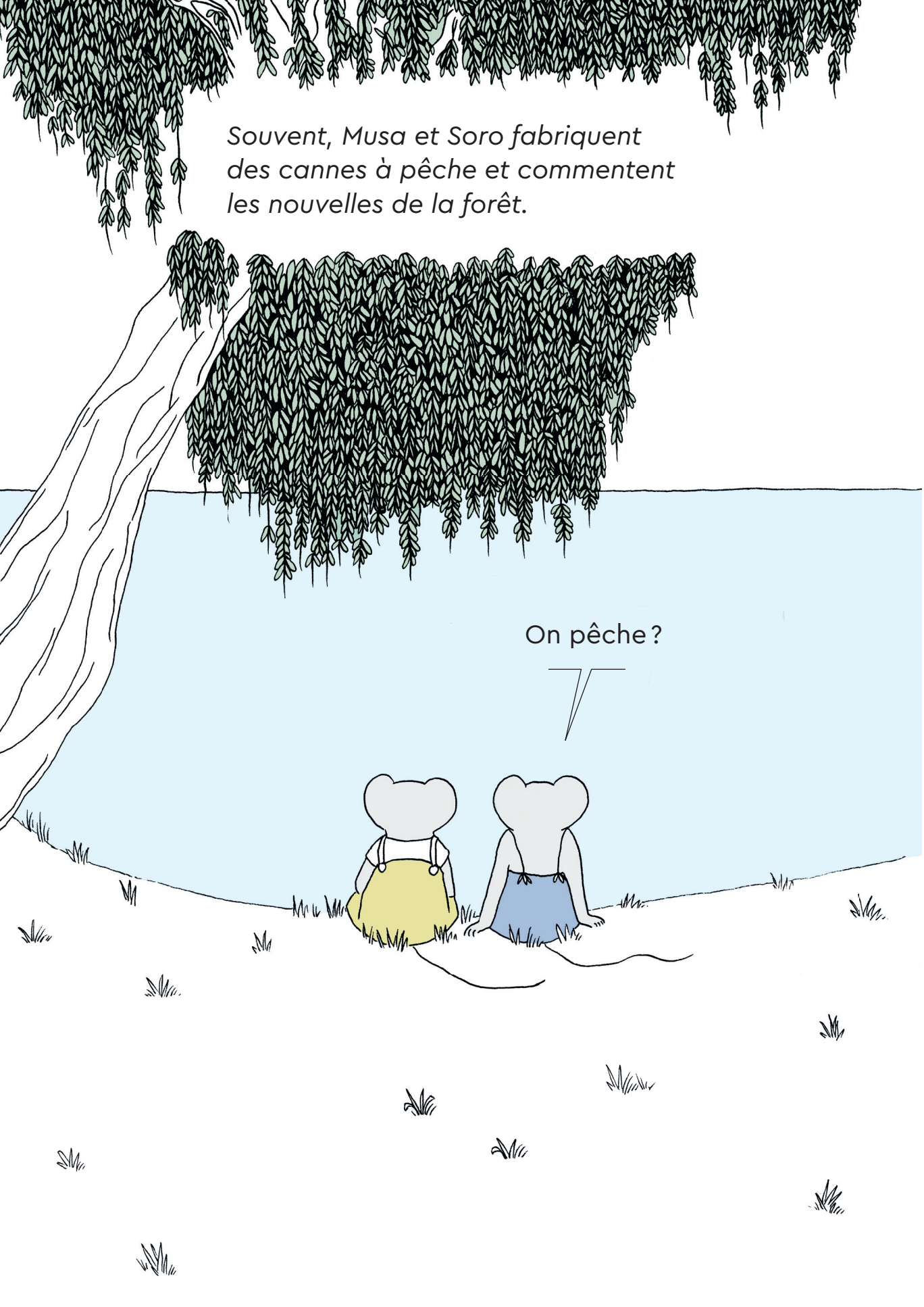
Oui, Pa, t'en fais pas!



*Musa et Soro sont amis depuis toujours
et le lac est leur lieu préféré.*







*Souvent, Musa et Soro fabriquent
des cannes à pêche et commentent
les nouvelles de la forêt.*

On pêche ?

